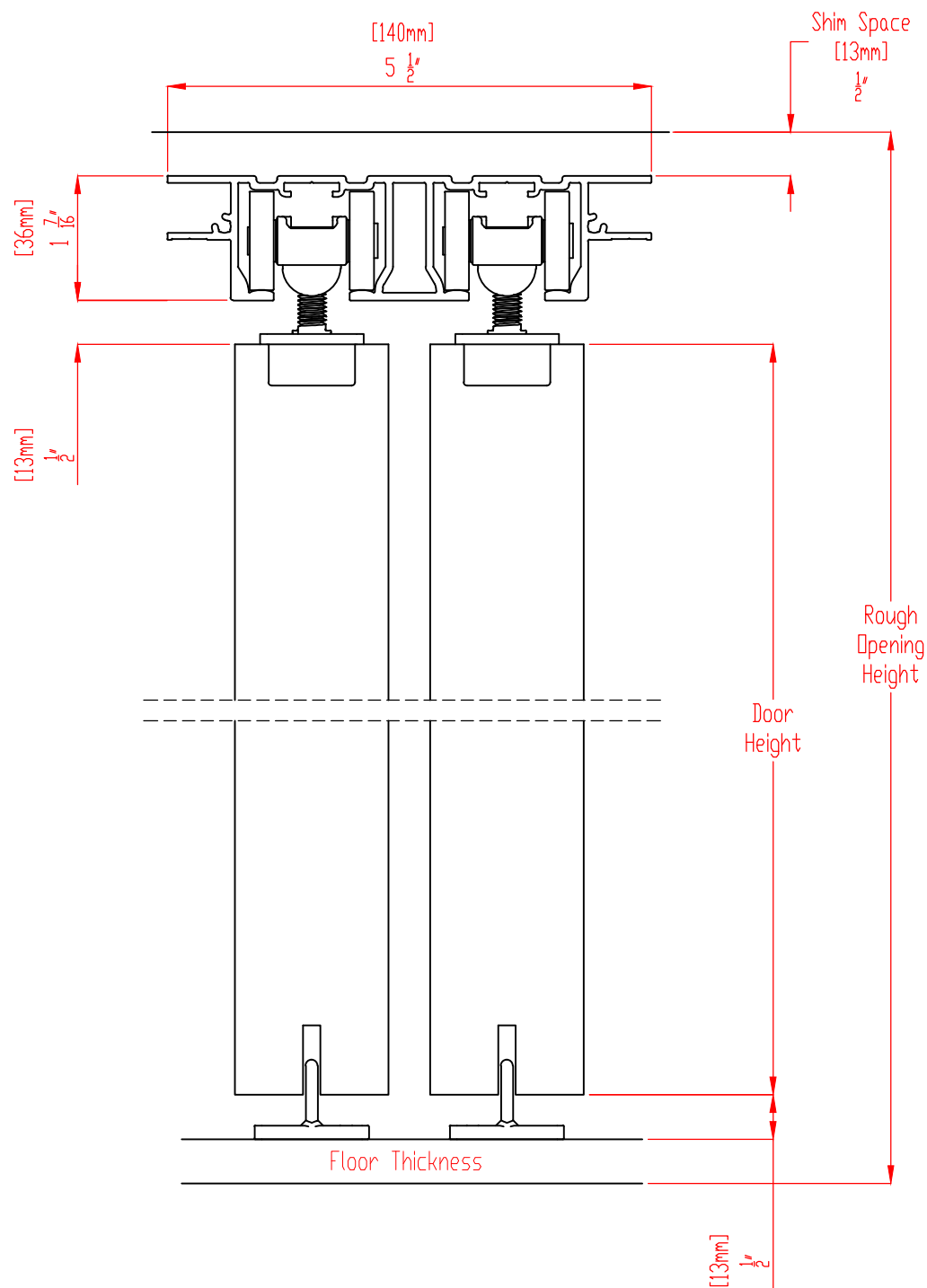


Rev.	Description	Approved	Date

Title FH-Ceiling Mount Track - Double 1 3/8"			The information contained in this drawing is the sole property of CSI For Doors. Any reproduction, disclosure or use of this document, without the written permission of CSI For Doors, is strictly prohibited.		
Item Code TSFHA2MF-138		Drawing Status Information Only			
Drawn By SL		Date 10/03/2017		 Quality Sliding Door Hardware 548 Finney Ct, Gardena CA 90248 Phone (888) 466 0030 Fax (310) 769 5824 www.cavitysliders.com	
Size Letter	Scale 1:2	Sheet 1 of 1			

FH-CeilingMountTrack

Double - 1-3/4"



Door Height = (Rough Opening Height) - (Floor Thickness) - (2-15/16")

Rough Opening Height = (Door Height) + (Floor Thickness) + (2-15/16")

The dimensions shown above are recommended guidelines. The final decision on dimensions and clearances is the responsibility of the installer. Whilst all care is taken to ensure the accuracy of all information, no responsibility will be accepted for any errors or omissions.

The information contained in this drawing is the sole property of Cavity Sliders USA Inc. Any reproduction, disclosure or use of this document, without the written permission of Cavity Sliders USA Inc, is strictly prohibited.

CavitySliders

The Pocket Door Experts

548 Finney Ct, Gardena, CA 90248

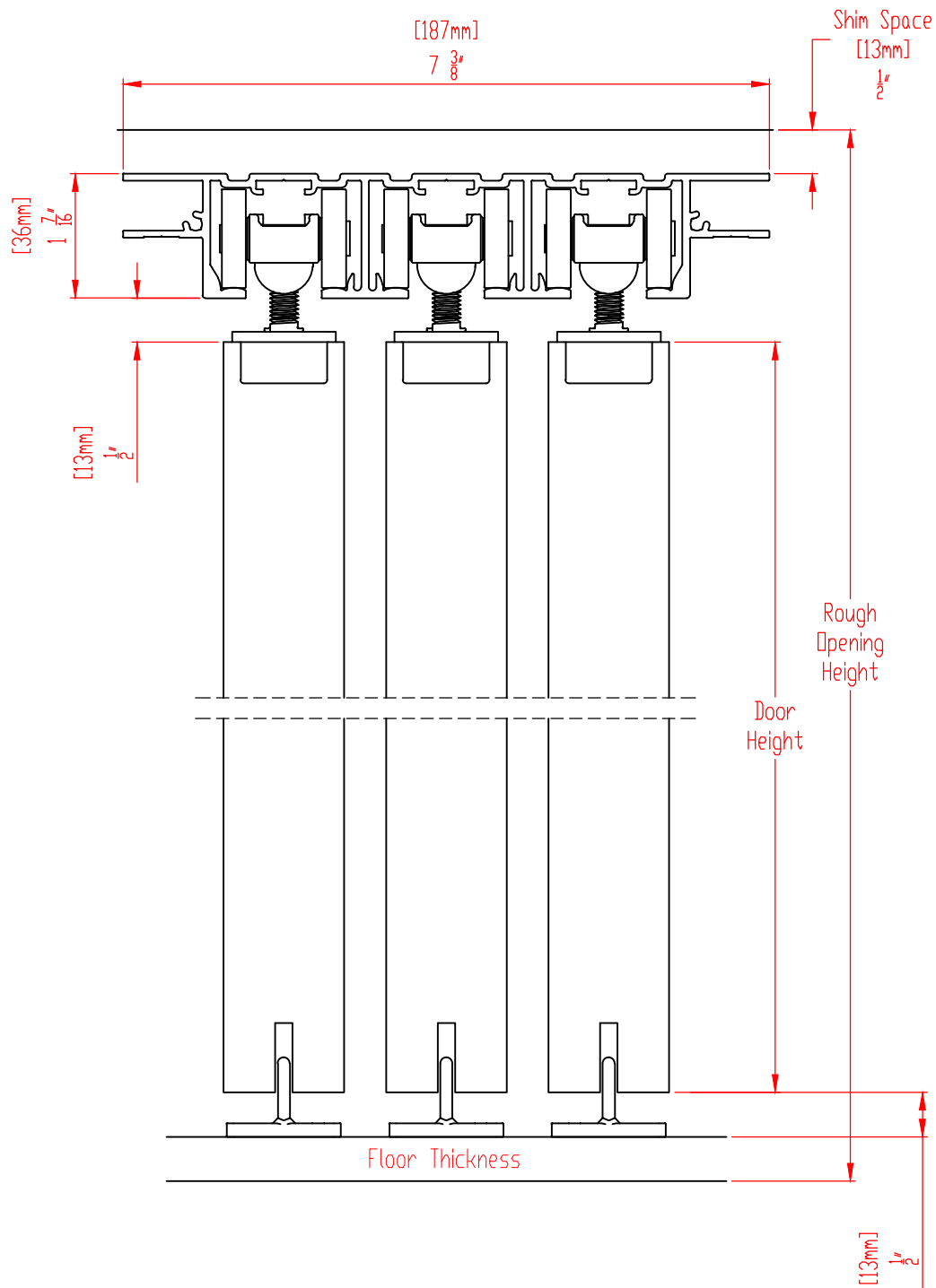
Phone +1 (888) 466 0030

Fax +1 (310) 769 5824

www.cavitysliders.com

FH-CeilingMountTrack

Triple - 1-3/8"



Door Height = (Rough Opening Height) - (Floor Thickness) - (2-15/16")

Rough Opening Height = (Door Height) + (Floor Thickness) + (2-15/16")

The dimensions shown above are recommended guidelines. The final decision on dimensions and clearances is the responsibility of the installer. Whilst all care is taken to ensure the accuracy of all information, no responsibility will be accepted for any errors or omissions.

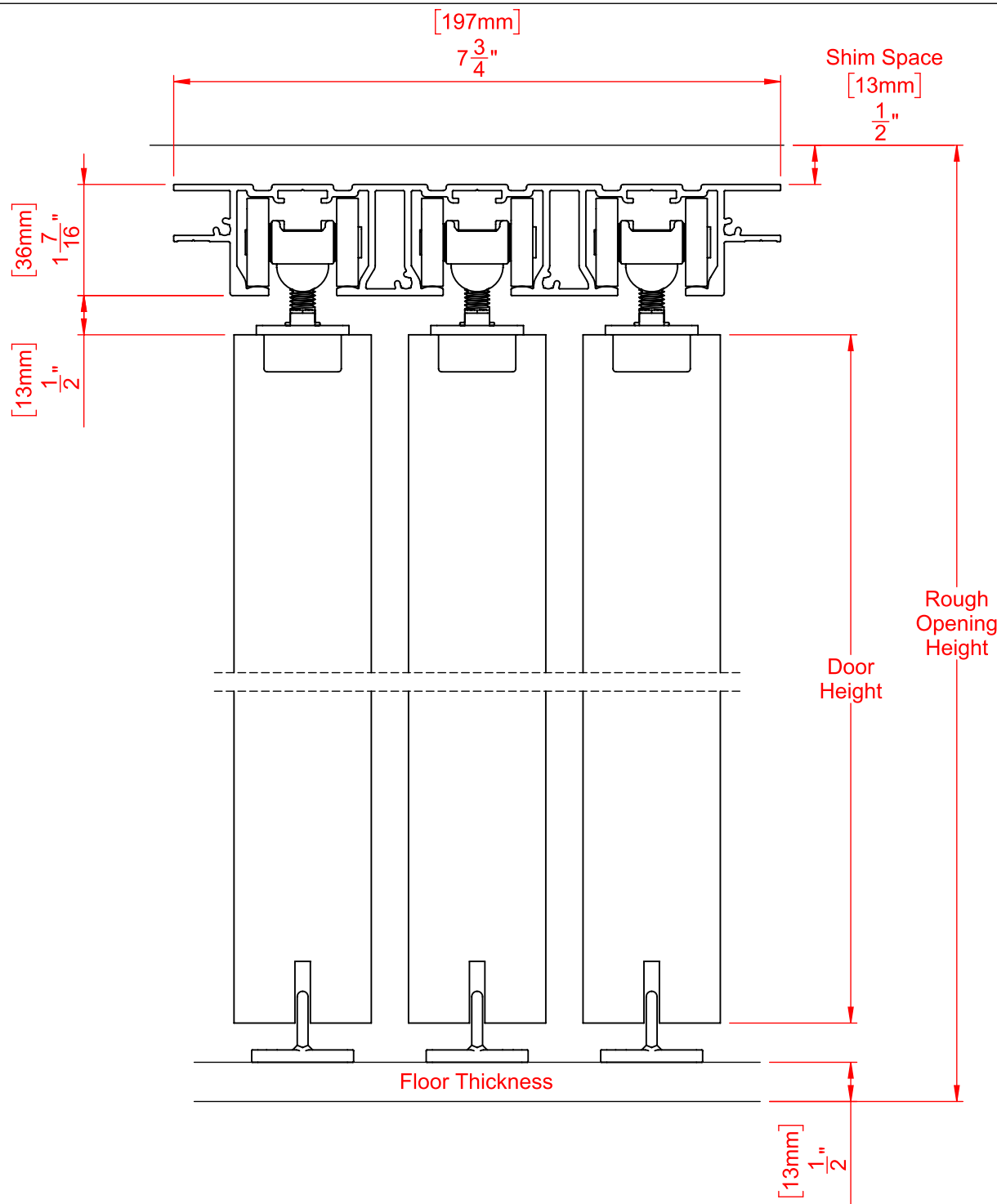
The information contained in this drawing is the sole property of Cavity Sliders USA Inc. Any reproduction, disclosure or use of this document, without the written permission of Cavity Sliders USA Inc, is strictly prohibited.

CavitySliders

The Pocket Door Experts
 548 Finney Ct, Gardena, CA 90248
 Phone +1 (888) 466 0030
 Fax +1 (310) 769 5824
www.cavitysliders.com

FH-CeilingMountTrack

Triple - 1-3/4"



Door Height = (Rough Opening Height) - (Floor Thickness) - (2-15/16")

Rough Opening Height = (Door Height) + (Floor Thickness) + (2-15/16")

The dimensions shown above are recommended guidelines. The final decision on dimensions and clearances is the responsibility of the installer. Whilst all care is taken to ensure the accuracy of all information, no responsibility will be accepted for any errors or omissions.

The information contained in this drawing is the sole property of Cavity Sliders USA Inc. Any reproduction, disclosure or use of this document, without the written permission of Cavity Sliders USA Inc, is strictly prohibited.

CavitySliders

The Pocket Door Experts
548 Finney Ct, Gardena, CA 90248
Phone +1 (888) 466 0030
Fax +1 (310) 769 5824
www.cavitysliders.com